

# IOI CORPORATION BERHAD

RSPO Membership No: 2-0002-04-000-00

PLANTATION MANAGEMENT UNIT

**Mayvin Grouping**

Sandakan, Sabah, Malaysia

**Intertek**

Valued Quality. Delivered.

## Public Summary Report (abridged version)

*"This report (including any enclosures and attachments) has been prepared for the exclusive use and benefit of the addressee(s) and solely for the purpose for which it is provided. Unless we provide express prior written consent, no part of this report should be reproduced, distributed or communicated to any third party. We do not accept any liability if this report is used for an alternative purpose from which it is intended, nor do we owe any duty of care to any third party in respect of this report."*

Report No.: R2019/10-5 IOI Corporation Berhad (Mayvin Grouping: ASA-04)

**ANNUAL SURVEILLANCE ASSESSMENT (ASA-04)  
REPORT ON RSPO CERTIFICATION****PUBLIC SUMMARY REPORT****IOI CORPORATION BERHAD**

RSPO Membership No: 2-0002-04-000-00

PLANTATION MANAGEMENT UNIT

**Mayvin Grouping**

Sandakan, Sabah, Malaysia

**Certificate No:**

Issued date:

Expiry date:

**RSPO 926888**

22 Dec 2010

21 Dec 2015

**Assessment Type**

Initial Certification (Main Assessment)

Annual Surveillance Assessment (ASA-01)

Annual Surveillance Assessment (ASA-02)

Annual Surveillance Assessment (ASA-03)

Annual Surveillance Assessment (ASA-04)

Re-Certification

**Assessment Dates**

23 - 27 Aug 2010

26 - 30 Sep 2011

16 - 20 Jul 2012

20 - 23 Aug 2013

07 - 10 Oct 2014

**Intertek Certification International Sdn Bhd (formerly known as Moody International Certification (Malaysia) Sdn Bhd)**

6-L12-01, Level 12, Tower 2, Menara PGRM No. 6 &amp; 8 Jalan Pudu Ulu, Cheras, 56100 Kuala Lumpur, Malaysia.

Tel: +00 (603) 9283 9881 Fax: +00 (603) 9284 8187 Email: ia.mysbaenquiry@intertek.com

Website: www.intertek.com

Report No.: R2019/10-5 IOI Corporation Berhad (Mayvin Grouping: ASA-04)

TABLE OF CONTENTS

Section	Content	Page No
<b>1.0</b>	<b>SCOPE OF ANNUAL SURVEILLANCE ASSESSMENT</b>	
1.1	Introduction	4
1.2	Location (address, GPS and map) mill, estates and hectarage	4
1.3	Description of supply base (fruit sources)	4-5
1.4	Year of plantings and cycle	5
1.5	Summary of Land Use – Conservation and HCV Areas	5-6
1.6	Other certifications held and Use of RSPO Trademarks	6
1.7	Organizational information/contact person	6
1.8	Tonnages Verified for Certification	7-8
1.9	Time Bound Plan	8
1.10	Abbreviations Used	9
<b>2.0</b>	<b>ASSESSMENT PROCESS</b>	
2.1	Assessment Methodology, Plan & Site Visits	10
2.2	Date of next scheduled visit	10
2.3	Qualifications of the Lead Assessor and Assessment Team	10
2.4	Certification Body	10-11
2.5	Process of Stakeholder consultation	11-12
<b>3.0</b>	<b>ASSESSMENT FINDINGS</b>	
3.1	Summary of findings	12
3.2	Status of Identified Noncompliance and Corrective Actions, Observations and Identified Positive Elements	12
3.3	Feedback Raised by Stakeholders and Findings	12
<b>4.0</b>	<b>ASSESSMENT CONCLUSION AND RECOMMENDATION</b>	
4.1	Acknowledgement of Internal Responsibility and Confirmation of Assessment Findings	13
4.2	Intertek RSPO Certification details for Mayvin grouping	13
<b>APPENDICES</b>		
Appendix A	Assessment Plan	14-17
Appendix B	Maps of location – Mill, Estates, Conservation and HCV areas	18-25

**Report No.: R2019/10-5 IOI Corporation Berhad (Mayvin Grouping: ASA-04)****1.0 SCOPE OF ANNUAL SURVEILLANCE ASSESSMENT****1.1 Introduction**

1.1.1 This Public Summary Report is the abridged version of the 4<sup>th</sup> Annual Surveillance Assessment (ASA-04) Report prepared for public notification, taking into consideration the protection of confidential and sensitive information of the client organization, which is consistent with the guiding principle specified by RSPO Certification System Standard. In the event, stakeholders, who require further details or clarification on any part of the content of the Public Summary Report, may contact RSPO Secretariat or Intertek Certification International. The full version of the assessment report has been submitted to RSPO Secretariat.

1.1.2 This 4<sup>th</sup> Annual Surveillance Assessment (ASA-04) was conducted on the Mayvin grouping of IOI Corporation Berhad, from 07-10 Oct 2014 to assess the organization's operations of the mill and its supply bases, for continued compliance against the RSPO Principles and Criteria (April 2013), Malaysian National Interpretation (MY- NI, November 2010) and RSPO Supply Chain Certification Standard (November 2011) for POM. This assessment also includes a review of the changes made by the PMU to comply with the requirements of the ratified new RSPO Principles and Criteria (effective 25 April 2013). It was found that the PMU is aware of the new RSPO Principles and Criteria and the transition period for compliance but has not yet make the necessary changes required.

The plantation management unit (PMU) or management unit is equivalent to a certification unit as defined in the RSPO Certification Systems Document. Each PMU consists of one mill and its supply bases which are made up of estates owned by IOI Corporation Berhad

**1.2 Location (address, GPS and map) of palm oil mill and estates**

Mayvin Grouping consists of one palm oil mill, namely Mayvin Palm Oil Mill and five (5) estates as indicated in Table 1 below, which includes the addresses and GPS locations of the mill and estates. The location maps are provided in **Appendix B**.

**Table 1: Address of Palm Oil Mill, Estates and GPS Location**

Name	Address	GPS Reference	
		Latitude	Longitude
Mayvin Palm Oil Mill (Capacity: 60 MT/hr)	Mayvin Palm Oil Mill, Telupid, 16km Off Sandakan/Telupid Road at 110 km, WDT No 164, 90009 Sandakan, Sabah, Malaysia	5°34.621' N	117°14.146' E
Mayvin 1 Estate	Mayvin 1 Estate, Telupid, 16 km Off Sandakan/Telupid Road at 110 km, WDT No 164, 90009 Sandakan, Sabah, Malaysia	5°34.621' N	117°14.146' E
Mayvin 2/3 Estate	Mayvin 2/3 Estate, WDT No 164, 90009 Sandakan, Sabah, Malaysia	5°32.999' N	117°13.670' E
Mayvin 5 Estate	Mayvin 5 Estate, Telupid, WDT No 164, 90009 Sandakan, Sabah, Malaysia	5°28.577' N	117°20.408' E
Mayvin 6 Estate	Mayvin 6 Estate, Telupid, WDT No 164, 90009 Sandakan, Sabah, Malaysia	5°28.656' N	117°22.581' E
Tangkalap Estate	Tangkalap Estate, Telupid, WDT No 164, 90009 Sandakan, Sabah, Malaysia	5°30.162' N	117°15.154' E

**1.3 Description of supply base (fruit sources)**

The supply base, i.e. FFB sources to the POM at Mayvin Grouping PMU are from the abovementioned 5 estates and from estates under another certified PMU (Pamol Sabah POM) of IOI Corporation Berhad. There are no FFB from Outside Crop Producers.

**Report No.: R2019/10-5 IOI Corporation Berhad (Mayvin Grouping: ASA-04)**

Details of the planted hectareage for the FFB supply for Mayvin grouping are as shown in Table 2 below.

**Table 2: Estate Area Summary – as at Sep 2014**

Estate	Area Summary (ha) as at Sep 2014	
	Certified Area	Planted Area
Mayvin 1 Estate	1,610.00	1,509.00
Mayvin 2/3 Estate	1,812.81	1,652.00
Mayvin 5 Estate	1,765.00	1,619.00
Mayvin 6 Estate	1,836.82	1,702.00
Tangkulap Estate	2,277.45	2,185.00
<b>Total:</b>	<b>9,302.26</b>	<b>8,667.00</b>

## Notes:

1. This Surveillance Assessment covered the overall land use for oil palm plantation areas, and the identified Conservation areas including HCV areas (if any) marked out at the estates.
2. The estates sampled for this Surveillance Assessment have been selected based on their potential risks on social, environmental and biodiversity issues such as their proximity to forest reserves, hill sides, riparian zones and high conservation value areas.

**1.4 Summary of plantings and cycle**

The 5 estates had been developed beginning from 1989. There was replanting in Tangkulap Estate for year 2012 and 2013, which is currently in the 2<sup>nd</sup> cycle of planting for the oil palms. The other estates are still in the 1<sup>st</sup> cycle of planting. The age profile is as shown in Table 3.

Table 3: Age Profile of Planted Oil Palm (Year: FY Jul 2013 / Jun 2014)

Estate Name	Year of Planting	Cycle of Planting	Mature OP (ha) – Above 3 years	Immature OP (ha) – 3 years & below
Mayvin 1 Estate	1994-1995	1 <sup>st</sup> cycle	1,509	-
Mayvin 2/3 Estate	1994-1995	1 <sup>st</sup> cycle	1652	-
Mayvin 5 Estate	1996-1997	1 <sup>st</sup> cycle	- 1,619	-
Mayvin 6 Estate	1996-1998	1 <sup>st</sup> cycle	1,702	-
Tangkulap Estate	1992, 1993, 1994 2012, 2013	1 <sup>st</sup> cycle 2 <sup>nd</sup> cycle	1,027 -	- 1158
		Total	7,509	1158

**Report No.: R2019/10-5 IOI Corporation Berhad (Mayvin Grouping: ASA-04)****1.5 Summary of Conservation and HCV Areas**

The summary of Conservation and HCV Areas as identified in Mayvin Grouping during this Surveillance Assessment is as shown in Table 4 below:

**Table 4: Conservation and HCV Areas**

#	Statement of Land Use (Ha)	Previous FY Jul 2013 / Jun 2014 (ASA-03) Hectarage – Ha	Current FY Jul 2014 / Jun 2015 (ASA-04) Hectarage – Ha
<b>1</b>	<b>Planted Area (ha) – Oil Palm</b>		
	- Mature	8,031.00	7,509.00
	- Immature	636.00	1,158.00
<b>2</b>	<b>Conservation Area (ha)</b>		
	- comprising buffer zones along small streams, hilly areas, swampy and unplantable areas	96.66	96.66
<b>3</b>	<b>HCV Area (ha)</b>		
	- comprising buffer zones near forest reserves, water catchments, burial & religious sites	8.24	8.24

**1.6 Other certifications held and Use of RSPO Trademarks**

IOI-Mayvin Grouping has been certified to International Sustainability & Carbon Certification (ISCC) on 02 Jul 2012. The RSPO's trademarks and logo are not being used by the PMU audited. Instructions for use were provided and acknowledged by the PMU through a signed Memorandum agreeing to adhere to the latest "RSPO Rules on Communications & Claims"

**1.7 Organizational information / Contact Person**

Mr. Too Heng Liew  
Head of Sustainability  
**IOI Corporation Berhad**  
Level 8, Two IOI Square, IOI Resort,  
62502 Putrajaya  
Malaysia  
Tel: 603 89478888  
Fax: 603 89478988  
Email: hltoo@ioigroup.com

Mr. NB Sudhakaran  
General Manager,  
IOI Corporation Berhad,  
Sandakan Regional Office,  
Mile 45, Jalan Sandakan/Telupid,  
W.D.T.No 164, 90009 Sandakan, Sabah,  
Malaysia  
Tel: 089 509101/102  
Fax: 089 509100  
Email: nbsudhakaran@yahoo.com

## Report No.: R2019/10-5 IOI Corporation Berhad (Mayvin Grouping: ASA-04)

## 1.8 Tonnages Verified for Certification

The breakdown of all the suppliers and their tonnages of FFB supplied to the **POM at Mayvin Grouping** based on the reporting period for FY Jul 2013 / Jun 2014 are as follows:

Table 5: FFB Supply Base Tonnages

#	Estate /Supplier	FFB Processed (MT)	Main Receiving Palm Oil Mill	RSPO P&C Certification By CB (date)
1.	Mayvin 1 Estate	32,660.84	Mayvin POM	ICI (22 Dec 2010)
2.	Mayvin 2/3 Estate	39,345.01	Mayvin POM	ICI (22 Dec 2010)
3.	Mayvin 5 Estate	41,164.61	Mayvin POM	ICI (22 Dec 2010)
4.	Mayvin 6 Estate	47,236.40	Mayvin POM	ICI (22 Dec 2010)
5.	Tangkalap Estate	27,509.25	Mayvin POM	ICI (22 Dec 2010)
6.	Meliau Pamol Estate	6,479.34	Pamol Sabah POM	SGS (03 Feb 2008)
7.	Nangoh Estate	0	Pamol Sabah POM	SGS (03 Feb 2008)
8.	Rungus Estate	0	Pamol Sabah POM	SGS (03 Feb 2008)
	<b>Total from Organization estates:</b>	<b>194,395.45</b>		
	Other Suppliers:	0		
	<b>Grand total:</b>	<b>194,395.45</b>		

Note:

- All the estates supplying the FFB to the POM at Mayvin Grouping are IOI owned and are RSPO certified estates. Mayvin 1, 2/3, 5, 6 and Tangkulap Estates are under the Mayvin POM Grouping. FFB also received by Mayvin POM from the Meliau Pamol Estate, Nangoh Estate and Rungus Estate under the Pamol Sabah POM Grouping, which is RSPO certified.

Total annual volumes / tonnages of FFB supplied from the supply base to Mayvin Grouping POM during the previous period, current Surveillance Assessment period and projected period are as follows:

Table 6: Annual Tonnages of FFB

Estate / Supplier	FFB Processed in FY2012/13 – previous		FFB Processed in FY2013/14 – current		FFB Processed for FY2014/15 – projected	
	MT	%	MT	%	MT	%
Mayvin Group Estates	218,619.47	97.32	187,916.11	96.67	184,260.00	75.21
Certified IOI PMUs	6,023.95	2.68	6,479.34	3.33	nil	0.0
Uncertified IOI PMUs	nil	0.0	nil	0.0	nil	0.0
Total	224,643.42	100.0	194,395.45	100.0	184,260.00	100.0
*SCCS Model for POM	SG		SG		SG	

The annual certifiable tonnages of CPO and PK production by Mayvin Grouping from the supply base/suppliers as assessed and verified during the current Surveillance Assessment and projected for next FY period are detailed as follows:

## Report No.: R2019/10-5 IOI Corporation Berhad (Mayvin Grouping: ASA-04)

Table 7: Annual Certifiable Tonnages of CPO and PK

Mayvin POM	FY 2012/2013		FY 2013/2014		FY 2014/2015 – projected	
<b>Total Certified FFB Processed (MT)</b>	224,643.42		194,395.45		184,260.00	
<b>Total Certified CPO Production (MT)</b>	46,838.15	% OER: 20.85	43,194.67	% OER: 22.22	40,537.28	% OER: 22.00
<b>Total Certified PK Production (MT)</b>	12,917.10	% KER: 5.75	11,138.86	% KER: 5.73	10,594.95	% KER: 5.75

\*Note: Currently, the POM has established and maintained procedures for the book keeping and monitoring requirements for the CPO at the mill and was verified to be the “**Segregation – SG**” model in accordance with the RSPO Supply Chain Certification Standards (SCCS) requirements.

### 1.9 Time Bound Plan for Other Management Units

IOI Group operates 12 palm oil mills and 77 oil palm estates throughout Malaysia and 2 palm oil mills in Indonesia. Recently, it acquired 2 palm oil mills and their supply base in Sabah. The organization is a member of RSPO since 2004 and has been taking an active role in the RSPO certification.

Currently, all the 12 Plantation Management Units in Malaysia have been certified (except IOI Pelita in Sarawak which does not have a palm oil mill and pending resolution of land dispute and decision by RSPO). The 2 PMUs in Indonesia and the 2 acquired PMUs in Sabah are scheduled for certification in 2015/2016 in accordance with its time bound plan to achieve RSPO certification for all its Plantation Management Units.

Based on the due diligence conducted on IOI there were no significant land conflicts, no replacement of primary forest or any area containing HCVs since Nov 2005, no labour disputes that are not being resolved through an agreed process, no evidence of non-compliance with law in any of the non-certified holdings.



## Report No.: R2019/10-5 IOI Corporation Berhad (Mayvin Grouping: ASA-04)

## 1.10 Abbreviations Used

CB	Certification Body	IUCN	International Union for Conservation of Nature
CHRA	Chemical Health & Risk Assessment	KER	Kernel Extraction Rate
CPO	Crude Palm Oil	LTA	Lost Time Accidents
CSDS	Chemical Safety Data Sheets	MSDS	Material Safety Data Sheets
CSPO	Certified Sustainable Palm Oil	MTCS	Malaysia Timber Certification Scheme
CSPK	Certified Sustainable Palm Kernel	NCR	Non-Conformance Report
EFB	Empty Fruit Bunch	NGO	Non-Government Organization
EHS	Environmental Health & Safety	OER	Oil Extraction Rate
EIA	Environmental Impact Assessment	OHS	Occupational Health & Safety
ETP	Effluent Treatment Plant	PEFC	Programme for the Endorsement of Forest Certification
FFB	Fresh Fruit Bunch	PK	Palm Kernel
GAP	Good Agriculture Practice	PMU	Plantation Management Unit
HCV	High Conservation Values	POM	Palm Oil Mill
Intertek	Intertek Certification International Sdn Bhd	POME	Palm Oil Mill Effluent
IOI	IOI Corporation Berhad	PPE	Personal Protective Equipment
IPM	Integrated Pest Management	SCCS	Supply Chain Certification Standard
ISCC	International Sustainability & Carbon Certification	SOP	Standard Operating Procedures

**Report No.: R2019/10-5 IOI Corporation Berhad (Mayvin Grouping: ASA-04)****2.0 ASSESSMENT PROCESS****2.1 Assessment Methodology, Plan and Site Visits**

Intertek has initiated public communications and notifications and invited the relevant stakeholders before the assessment to provide feedback and comments on their concern (if any) on Mayvin Grouping regarding the environmental, biodiversity, community development and other relevant issues.

From 07-10 Oct 2014, the Assessment team of Intertek conducted the Surveillance Assessment in which two (viz., Mayvin 5 Estate and Mayvin 6 Estate) out of the five estates of Mayvin Grouping as well as the palm oil mill were assessed for compliance against the RSPO requirements. The number of estates sampled was based on a minimum sample of  $0.8\sqrt{y}$  where  $y$  is the number of management sub-units and the selection was made based on their potential risks on social, environmental and biodiversity issues such as their proximity to forest reserves, hill sides, riparian zones and high conservation value areas.

During the on-site assessment, relevant documents and records, including Standard Operating Procedures (SOP), management plans, hectare development, FFB, CPO and PK production, oil palm age profile, operational controls and measures, operational data and records, training records, etc. were reviewed and verified for compliance. The Assessment team using the process approach auditing technique covered the palm oil mill and estate operations, agricultural practices, pest management, pesticide and fertilizer application, occupational health and safety, social accountability, environment and other requirements. Stakeholders' interviews were conducted during the assessment and feedback obtained as part of information and evidence gathering (See section 2.5 Process of stakeholder consultation).

Mayvin Grouping POM was also assessed against the requirements for the Segregation Module as specified in RSPO Supply Chain Certification Standard for CPO mill. This part of the assessment covered the verification of implementation of documented procedures and availability of records to demonstrate compliance against all the elements for Segregation requirements. These include documented procedure, purchasing and goods in, record keeping, sales and goods out, processing, monitoring and traceability of the CSPO and CSPK quantities, training for staff and claims.

After completion of the on-site field assessment, Intertek also performed the evaluation of conformity against the RSPO Certification System requirements for CB. The assessment report, findings and associated documents were evaluated through an independent review by the Intertek Internal Technical Reviewer/Panel prior to the approval of this report and decision on continued certification by Intertek

The details of the Assessment Plan (actual on-site) are provided in **Appendix A**.

The auditors also conducted an on-site effective verification of the 2 Major NCRs that were closed and the corrective actions for the 6 observations raised during the previous Surveillance Assessment (ASA-03). Actions were verified to be effectively taken and implemented on all the findings. Details of the findings and actions taken are provided in Section 3.2 of this report.

**2.2 Date of next scheduled visit**

The next scheduled visit will be the Re-Certification Assessment which will be carried out within a 3 months period prior to the expiry of the certificate.

**2.3 Qualifications of the Lead Assessor and Assessment Team**

The next scheduled visit will be the Re-Certification Assessment which will be carried out within a 3 months period prior to the expiry of the certificate.

**2.4 Certification Body**

Intertek Certification International Sdn Bhd [formerly known as Moody International Certification (Malaysia) Sdn Bhd] is part of the Intertek Group, which is a worldwide technical services organization dedicated to reducing clients' risks by providing technical inspection services, management system certification in quality, environmental, occupational safety & health and product certification, RSPO P&C, RSPO SCC, ISCC, Marine Sustainability Chain-of-Custody, MTCS and PEFC Chain-of Custody certification in applicable industry sectors including the agricultural and forestry sectors. Intertek operates globally providing clients with a wide-ranging technical inspection expertise and access to thousands of skilled specialists worldwide. Intertek Group's certification business is ranked in the top 10 worldwide, and is available globally offering certification across a wide range of industries.

**Report No.: R2019/10-5 IOI Corporation Berhad (Mayvin Grouping: ASA-04)****2.5 Process of stakeholder consultation**

Stakeholder consultations began with notification of the upcoming assessment through the websites of RSPO, IOI and Intertek. E-mails, facsimiles and letters of the same were sent to applicable stakeholders including government agencies, NGOs and local communities. Telephone enquiries were made prior to the actual assessment and stakeholder's response and feedback received were followed up accordingly.

During the assessment, stakeholders were interviewed and their feedbacks were recorded. Among the stakeholders consulted were workers, trade union leaders, women representatives; local community leaders, representatives of government departments / agencies and NGOs, fertilizer suppliers and contractors.

Details on stakeholders' feedback, PMU response and Intertek verification / comments are provided in **section 3.3**.

Among the list of key stakeholders consulted was the following:

Government Agencies (by emails)

- |   |   |
|---|---|
| 1. Department of Lands And Mines, WP              | 10. Environment Protection Department Sabah           |
| 2. Department of Environment, WP                  | 11. Department of Forestry, Sabah                     |
| 3. Department of Forestry Peninsular Malaysia     | 12. Department of Immigration, Sabah                  |
| 4. Department of Immigration, WP                  | 13. Department of Irrigation & Drainage, Sabah        |
| 5. Department of Irrigation & Drainage, WP        | 14. Department of Labour, Sabah                       |
| 6. Department of Labour, WP                       | 15. Department of Occupational Safety & Health, Sabah |
| 7. Department of Occupational Safety & Health. WP | 16. Sabah Wildlife Department                         |
| 8. Department of Orang Asli Affairs, WP           | 17. Land and Mines Office, Sabah                      |
| 9. Department of Wildlife & National Parks, WP    |   |

Statutory Bodies (by emails)

- |   |   |
|---|---|
| 18. Malaysian Palm Oil Board (MPOB)                   | 23. Malaysian Palm Oil Board (MPOB) - Sarawak Region  |
| 19. Malaysian Palm Oil Board (MPOB) - Northern Region | 24. Malaysian Palm Oil Board (MPOB) - Sabah Region    |
| 20. Malaysian Palm Oil Board (MPOB) - Central Region  | 25. Malaysia Palm Oil Association (MPOA)              |
| 21. Malaysian Palm Oil Board (MPOB) - Southern Region | 26. Malaysia Palm Oil Association Kuala Lumpur (MPOA) |
| 22. Malaysian Palm Oil Board (MPOB) - Eastern Region  | 27. Malaysia Palm Oil Association Sabah (MPOA)        |

NGOs (by emails)

- |  |   |
|--|---|
| 28. All Women's Action Society (AWAM)  | 57. Malaysian Nature Society Terengganu   |
| 29. BCSDM - Business Council for Sustainable Development in Malaysia         | 58. Malaysian Plant Protection Society (MAPPS)  |
| 30. Borneo Child Aid Society (Humana)  | 59. Mountaineering and Outdoor Pursuits Association of Negeri Sembilan                            |
| 31. Borneo Resources Institute Malaysia (BRIMAS)                             | 60. National Council of Welfare & Social Development Malaysia - NCWSDM                            |
| 32. Borneo Rhino Alliance (BORA)   | 61. National Union of Plantation Workers (NUPW)   |
| 33. Center for Orang Asli Concerns COAC                                      | 62. Partners of Community Organisations (PACOS)   |
| 34. Centre for Environment, Technology and Development, Malaysia - CETDEM    | 63. Penang Institute previously known as Socio-Economic & Environmental Research Institute (SERI) |
| 35. Consumers Association Of Penang - CAP                                    | 64. Proforest - South East Asia Regional Office   |
| 36. EcoKnights   | 65. R.E.A.C.H. - Regional Environmental Awareness Cameron Highlands                               |
| 37. Environmental Management and Research Association of Malaysia (ENSEARCH) | 66. Sabah Wetlands Conservation Society (SWCS)  |
| 38. Environmental Protection Society Malaysia (EPSM)                         | 67. SEPA - Sabah Environmental Protection Association   |
| 39. Friends of the Earth, Malaysia   | 68. SUARAM - Suara Rakyat Malaysia  |
| 40. Future in Our Hands Society, Malaysia                                    | 69. SUHAKAM - National Human Rights Society - Persatuan Kebangsaan Hak Asasi Manusia              |
| 41. Global Environment Centre  | 70. Sustainable Development Network Malaysia (SUSDEN)   |
| 42. Institute of Foresters, Malaysia (IRIM)                                  | 71. Tenaganita Sdn Bhd  |
| 43. JUST - International Movement for a Just World                           | 72. The Malaysian Forum of Environmental Journalist (MFEJ)  |
| 44. Malaysian Environmental NGOs - MENGO                                     | 73. TRAFFIC - the wildlife trade monitoring network   |
| 45. Malaysian National Animal Welfare Foundation - MNAWF                     | 74. Transparency International - Malaysian Chapter  |
| 46. Malaysian Nature Society (MNS) Kuala Lumpur                              | 75. Treat Every Environment Special Sdn Bhd. (TrEES)  |
| 47. Malaysian Nature Society Johor   | 76. United Nations Development Programme - UNDP Malaysia  |
| 48. Malaysian Nature Society Kedah   | 77. Water Watch Penang (WWP)  |
| 49. Malaysian Nature Society Kelantan  | 78. Wetlands International (Malaysia)   |
| 50. Malaysian Nature Society Kuching   | 79. Wild Asia Sdn Bhd   |
| 51. Malaysian Nature Society Melaka/Negeri Sembilan                          | 80. World Wide Fund for Nature (WWF) Malaysia   |
| 52. Malaysian Nature Society Miri  | 81. World Wide Fund of Nature (WWF) Sabah   |
| 53. Malaysian Nature Society Pahang  | 82. UNION - AMESU   |
| 54. Malaysian Nature Society Perak   | 83. Malaysian CropLife & Public Health Association (MCPA)   |
| 55. Malaysian Nature Society Pulau Pinang                                    | 84. Pesticide Action Network Asia and the Pacific (PAN AP)  |
| 56. Malaysian Nature Society Sabah   |   |

Local community (On-site interviews)

**Report No.: R2019/10-5 IOI Corporation Berhad (Mayvin Grouping: ASA-04)**

Gender representatives  
Workers & Workers representatives

Suppliers & Contractors representatives

**3.0 ASSESSMENT FINDINGS****3.1 Summary of findings**

The assessment confirmed that Mayvin grouping demonstrated compliance against the RSPO Principles and Criteria (April 2013), Malaysian National Interpretation (MY- NI, November 2010) and RSPO Supply Chain Certification Standard (November 2011) for POM.

**3.1.1 Supply Chain Certification Standards Findings - on CPO Mill**

**The Supply Chain model applied at Mayvin grouping POM during this assessment is Segregation.**

**3.1.2 Status on Supply Chain on POM:**

Based on the documents and records presented during the on-site verifications made, it is concluded that the **Mayvin grouping** POM has been able to comply with the requirements of the RSPO SCCS under the 'SG' model and is thus eligible for 'SG' trading for its palm products for year 2014.

**3.2 Status of Identified Noncompliance and Corrective Actions, Observations and Identified Positive Elements**

All previous non-conformances and observation have been closed off. During this assessment, there was 1 Minor NCR. The root cause and corrective action taken by the company were reviewed and these had been accordingly incorporated into the full detailed report.

**Identified Positive Elements**

- 1) IOI Corporation Berhad is one of the biggest partners of HUMANA i.e. Borneo Child Aid. About 63 teachers in Humana are paid by IOI and another 20 teachers are paid by the Government of Indonesia. Humana has provided education assistance for more than 2000 migrant estate children.
- 2) The PMU has a team of committed staff and good support from all employees on the RSPO certification

**3.3 Feedback Raised by Stakeholders and Findings**

Intertek had obtained some written and verbal feedback from the stakeholders on the environmental and social performance of Mayvin grouping operations in the course of assessment and consultations. During the Annual Surveillance Assessment (ASA-04), all pertinent feedback issues were reviewed and followed up for verification and these had been accordingly incorporated into the full detailed report.

**Report No.: R2019/10-5 IOI Corporation Berhad (Mayvin Grouping: ASA-04)****4.0 Assessment Conclusion and Recommendation**

Based on the findings above, IOI Mayvin Grouping had been able to demonstrate its compliance with the RSPO Principles and Criteria (October 2007), Malaysian National Interpretation (MY-NI 2010) and the RSPO Supply Chain Certification Standard (November 2011) for Palm Oil Mill.

Therefore, it is recommended that the certification of IOI Mayvin Grouping be approved and continued.

Full report signed off by:

Dr. Ooi Cheng Lee  
Lead Assessor  
Intertek Certification International Sdn Bhd

**4.1 Acknowledgement of Internal Responsibility and Confirmation of Assessment Findings**

This is to acknowledge and confirm the assessment visits described in this report and the acceptance of the contents and findings in this assessment report.

Full report acknowledged and signed off by:

Mr. N.B Sudhakaran  
General Manager (Sandakan Region)  
IOI Corporation Berhad

**Report No.: R2019/10-5 IOI Corporation Berhad (Mayvin Grouping: ASA-04)**

**4.2 Intertek RSPO Certificate details for Mayvin grouping**

Certificate No:	RSPO 926888
Issue date:	22 Dec 2010
Expiry date:	21 Dec 2015
Organization	IOI Corporation Berhad
Address of Head Office:	Level 8, Two IOI Square, IOI Resort, 62502 Putrajaya, Malaysia
RSPO Membership No:	2-0002-04-000-00
Plantation Management Unit:	Mayvin Grouping
Address of POM:	16km Off Sandakan / Telupid Road at 110km, WDT No. 164., 90009 Sandakan, Sabah, Malaysia
Standards:	RSPO Principles and Criteria (April 2013); Malaysian National Interpretation (November 2010); RSPO Supply Chain Certification Standards (November 2011) for the Palm Oil Mill.
Certification scope:	Production of Crude Palm Oil and Palm Kernels
Supply Chain model for CPO & PK:	Segregation (SG)

Details of the Mill and Supply bases covered by this certificate and the tonnage approved are:

Name	Address	GPS Reference	
		Latitude	Longitude
Mayvin Palm Oil Mill (Capacity: 60 MT/hr)	Mayvin Palm Oil Mill, Telupid, 16km Off Sandakan/Telupid Road at 110km, WDT No 164, 90009 Sandakan, Sabah, Malaysia	5°34.621' N	117°14.146' E
Mayvin 1 Estate	Mayvin 1 Estate, Telupid, 16 km Off Sandakan/Telupid Road at 110km, WDT No 164, 90009 Sandakan, Sabah, Malaysia	5°34.621' N	117°14.146' E
Mayvin 2/3 Estate	Mayvin 2/3 Estate, WDT No 164, 90009 Sandakan, Sabah, Malaysia	5°32.999' N	117°13.670' E
Mayvin 5 Estate	Mayvin 5 Estate, Telupid, WDT No 164, 90009 Sandakan, Sabah, Malaysia	5°28.577' N	117°20.408' E
Mayvin 6 Estate	Mayvin 6 Estate, Telupid, WDT No 164, 90009 Sandakan, Sabah, Malaysia	5°28.656' N	117°22.581' E
Tangkalap Estate	Tangkalap Estate, Telupid, WDT No 164, 90009 Sandakan, Sabah, Malaysia	5°30.162' N	117°15.154' E

**Report No.: R2019/10-5 IOI Corporation Berhad (Mayvin Grouping: ASA-04)**

The annual certified tonnages of CPO and PK production by Mayvin Grouping from the supply base/suppliers as assessed and verified during the current Surveillance Assessment and projected for next FY period are detailed as follows:

<b>Mayvin POM</b>	<b>FY 2012/2013</b>	<b>FY 2013/2014</b>	<b>FY 2014/2015 – projected</b>
<b>Total Certified FFB Processed (MT)</b>	224,643.42	194,395.45	184,260.00
<b>Total Certified CPO Production (MT)</b>	46,838.15	43,194.67	40,537.28
<b>Total Certified PK Production (MT)</b>	12,917.10	11,138.86	10,594.95
*SCCS Model for POM	SG	SG	SG

Report No.: R2019/10-5 IOI Corporation Berhad (Mayvin Grouping: ASA-04)

Appendix A:  
Certification Assessment Plan (Actual)

Date	Time (Note 3)	Assessors and Assessment Activity		
		Assessment Team		
7/10/2014 Day 1	8.00 am – 2.00 pm	Travel to Mayvin grouping Palm Oil Mill (POM) Office		
	2.00 pm - 3.30 pm	Lunch Break		
	3.30 pm – 4.00 pm	<b>Opening Meeting and Briefing at Mayvin grouping POM Office (to be attended by representatives from the Estates as well)</b>		
	4.00 pm – 5.30 pm	Document Review and-Assessment by all Assessors on respective RSPO P&C:1 to 8 at POM		
		<b>OCL</b>	<b>AL</b>	<b>JMD</b>
		<b>Site assessment at Palm Oil Mill</b> <ul style="list-style-type: none"> <li>• P1 Transparency</li> <li>• P8 Continual Improvement</li> <li>• Supply Chain for POM (SCCS)</li> </ul>	<b>Site assessment at Palm Oil Mill</b> <ul style="list-style-type: none"> <li>• P4 Best Practices at Mill</li> <li>• P5 Environmental , Conservation</li> <li>• P8 Continual Improvement</li> </ul>	<b>Site assessment at Palm Oil Mill</b> <ul style="list-style-type: none"> <li>• P6 Employees, Individuals &amp; Communities incl. Gender Issues</li> <li>• P8 Continual Improvement</li> </ul>
	<ul style="list-style-type: none"> <li>• Review of changes for compliance to revised P&amp;C 2013</li> <li>• Review of Time Bound Plan</li> <li>• Verification for compliance with rules on partial certification</li> </ul>			
5.30 pm – 8.00 pm	Travel to Hotel & Break			
8.00 pm – 9.00 pm	Team Meeting and Discussion			

Date	Time	Assessors and Assessment Activity		
		OCL	AL	JMD
8/10/2014 Day 2	8.30 am – 12.30pm	<b>Site assessment at Mayvin 5 estate</b> <ul style="list-style-type: none"> <li>• P1 Transparency</li> <li>• P2 Laws &amp; regulations</li> <li>• P3 Economic &amp; Financial Viability</li> <li>• P8 Continual Improvement</li> </ul>	<b>Site assessment at Mayvin 5 estate</b> <ul style="list-style-type: none"> <li>• P4 Best Practices at Estates</li> <li>• P5 Environmental, Conservation, including HCV</li> <li>• P7 New Plantings</li> <li>• P8 Continual Improvement</li> </ul>	<b>Site assessment at Mayvin 5 estate</b> <ul style="list-style-type: none"> <li>• P6 Employees, Individuals &amp; Communities incl. Gender Issues</li> <li>• P8 Continual Improvement</li> </ul>
		Lunch Break		
	12.30 pm – 1.30 pm			
	1.30 pm - 5.30 pm	<b>Continue site assessment at Mayvin 5 estate</b>	<b>Continue site assessment at Mayvin 5 estate</b>	<b>Continue site assessment at Mayvin 5 estate</b>
	5.30 pm – 8.00 pm	Travel to Hotel & Break		
8.00 pm – 9.00 pm	Team Meeting and Discussion			

Date	Time	Assessors and Assessment Activity		
		OCL	AL	JMD
9/10/2014 Day 3	8.30 am – 12.30pm	<b>Site assessment at Mayvin 6 estate</b> <ul style="list-style-type: none"> <li>• P1 Transparency</li> <li>• P2 Laws &amp; regulations</li> <li>• P3 Economic &amp; Financial Viability</li> <li>• P8 Continual Improvement</li> </ul>	<b>Site assessment at Mayvin 6 estate</b> <ul style="list-style-type: none"> <li>• P4 Best Practices at Estates</li> <li>• P5 Environmental, Conservation, including HCV</li> <li>• P7 New Plantings</li> <li>• P8 Continual Improvement</li> </ul>	<b>Site assessment at Mayvin 6 estate</b> <ul style="list-style-type: none"> <li>• P6 Employees, Individuals &amp; Communities incl. Gender Issues</li> <li>• P8 Continual Improvement</li> </ul>
		Lunch Break		
	12.30 pm – 1.30 pm			
	1.30 pm - 5.30 pm	<b>Continue site assessment at Mayvin 6 estate</b>	<b>Continue site assessment at Mayvin 6 estate</b>	<b>Continue site assessment at Mayvin 6 estate</b>
	5.30 pm – 8.00 pm	Travel to Hotel & Break		
8.00 pm – 9.00 pm	Team Meeting and Discussion			



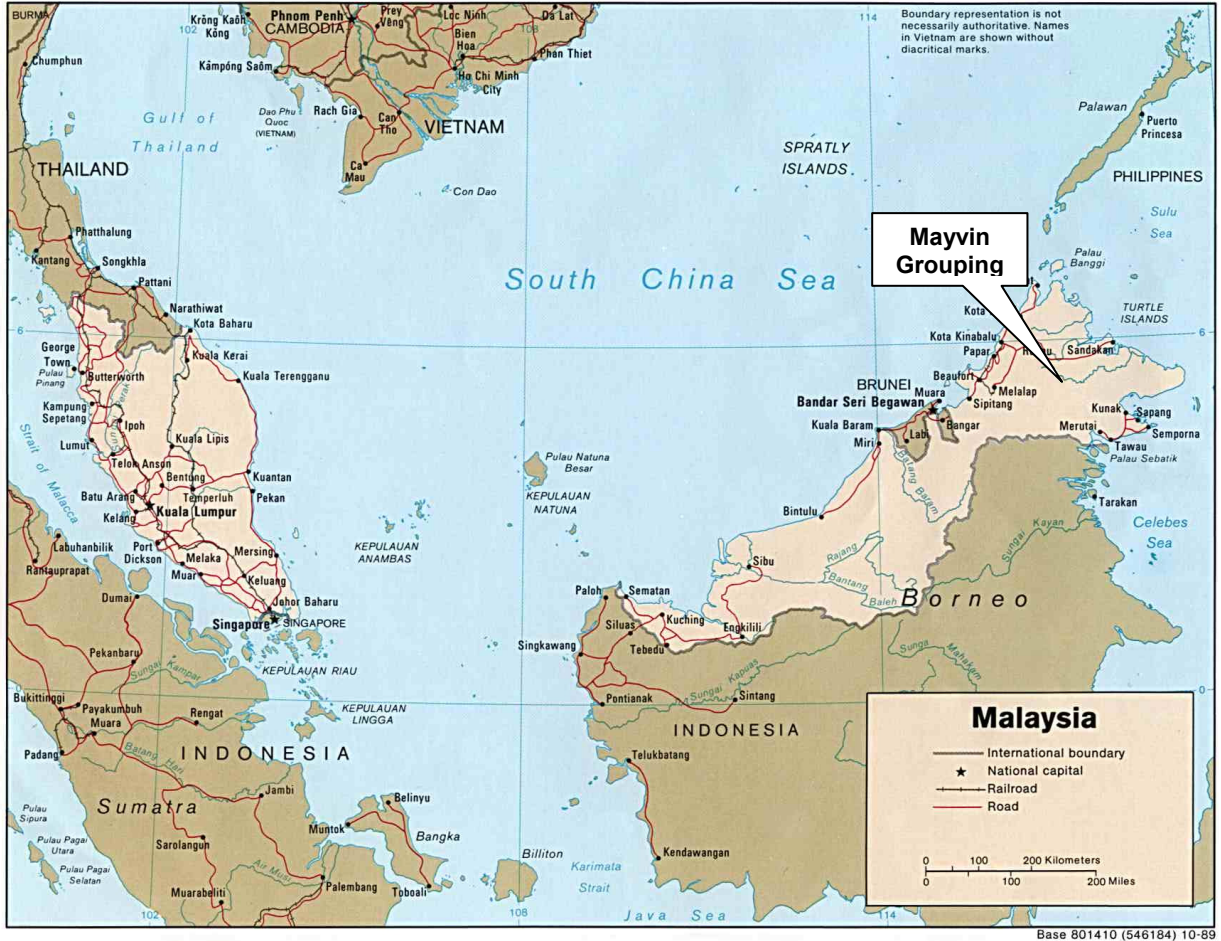
Report No.: R2019/10-5 IOI Corporation Berhad (Mayvin Grouping: ASA-04)

Date	Time	Assessors and Assessment Activity		
		OCL	AL	JMD
10/10/2014 Day 4	8.30 am – 12.30pm	<b>Site assessment at Mayvin grouping Palm Oil Mill</b> <ul style="list-style-type: none"> <li>• P2 Laws &amp; regulations</li> <li>• P3 Economic &amp; Financial Viability</li> <li>• Supply Chain for POM (SCCS)</li> </ul>	<b>Site assessment at Mayvin grouping estate to follow up on any specific criteria/areas</b> <ul style="list-style-type: none"> <li>• P4 Best Practices at Estates</li> <li>• P5 Environmental, Conservation, including HCV</li> <li>• P7 New Plantings</li> <li>• P8 Continual Improvement</li> </ul>	<b>Site assessment at Mayvin grouping estate to follow up on any specific criteria/areas</b> <ul style="list-style-type: none"> <li>• P6 Employees, Individuals &amp; Communities incl. Gender Issues</li> <li>• P8 Continual Improvement</li> </ul>
	1.30 pm – 3.30 pm	<b>Stakeholders' Consultation on the following categories (see Notes 1 and 2 below):</b> <ul style="list-style-type: none"> <li>• <b>Contractors</b></li> <li>• <b>Suppliers</b></li> <li>• <b>Transporters</b></li> <li>• <b>NGOs</b></li> <li>• <b>Government Department / Agencies</b></li> <li>• <b>Local Community</b></li> <li>• <b>Settlers, in the case of independent and organized smallholders.</b></li> </ul> <p>Notes</p> <p>1. It is mandatory for the PMU to inform Intertek and provide the information (as a minimum the no. of stakeholders in each applicable category and contact number) on the stakeholders <u>prior</u> to the assessment.</p> <p>2. This will facilitate the random and impartial selection of stakeholders (including independent and organized smallholders, where applicable) and to meet the sample size requirement.</p>		
	3.30 pm – 4.30 pm	Preparation for Closing Meeting		
	4.30 pm - 5.30 pm	Team Meeting and Discussions with Mayvin grouping Management Representative		
	5.30 pm - 6.00 pm	<b>Closing Meeting &amp; Briefing at Palm Oil Mill Office</b>		

**Report No.: R2019/10-5 IOI Corporation Berhad (Mayvin Grouping: ASA-04)**

**Appendix B-1:**

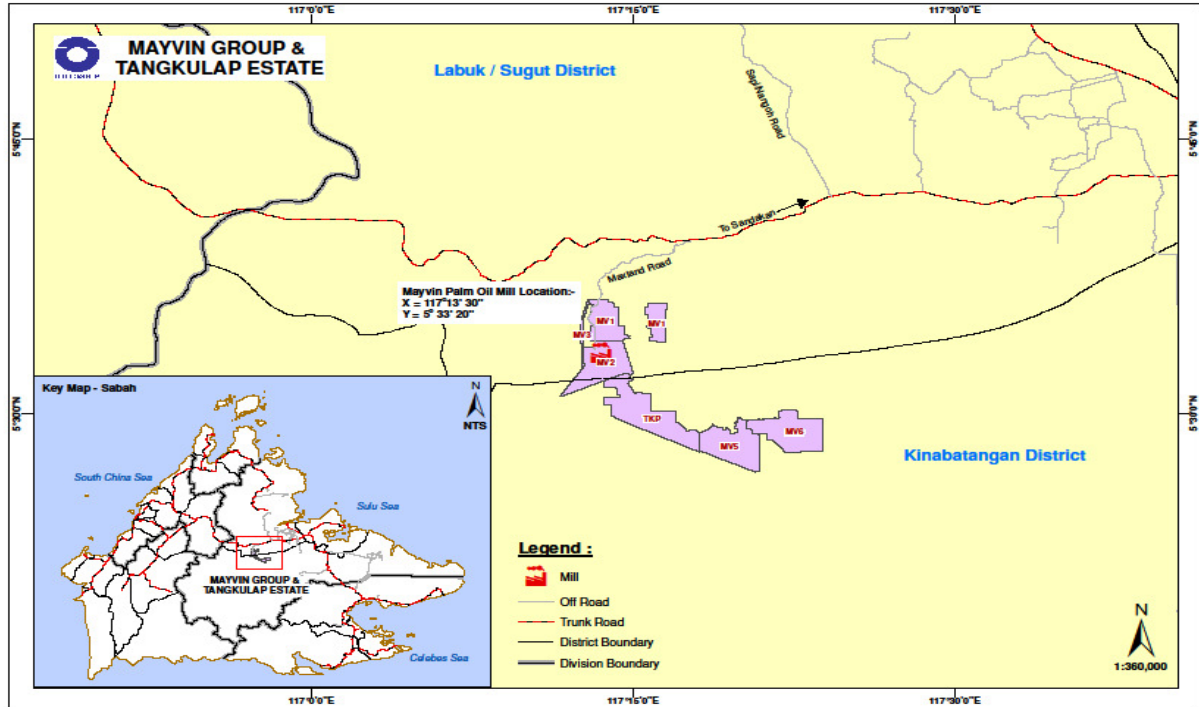
**Location Map of IOI Mayvin Grouping, Sandakan, Sabah, Malaysia**



**Report No.: R2019/10-5 IOI Corporation Berhad (Mayvin Grouping: ASA-04)**

**Appendix B-2:**

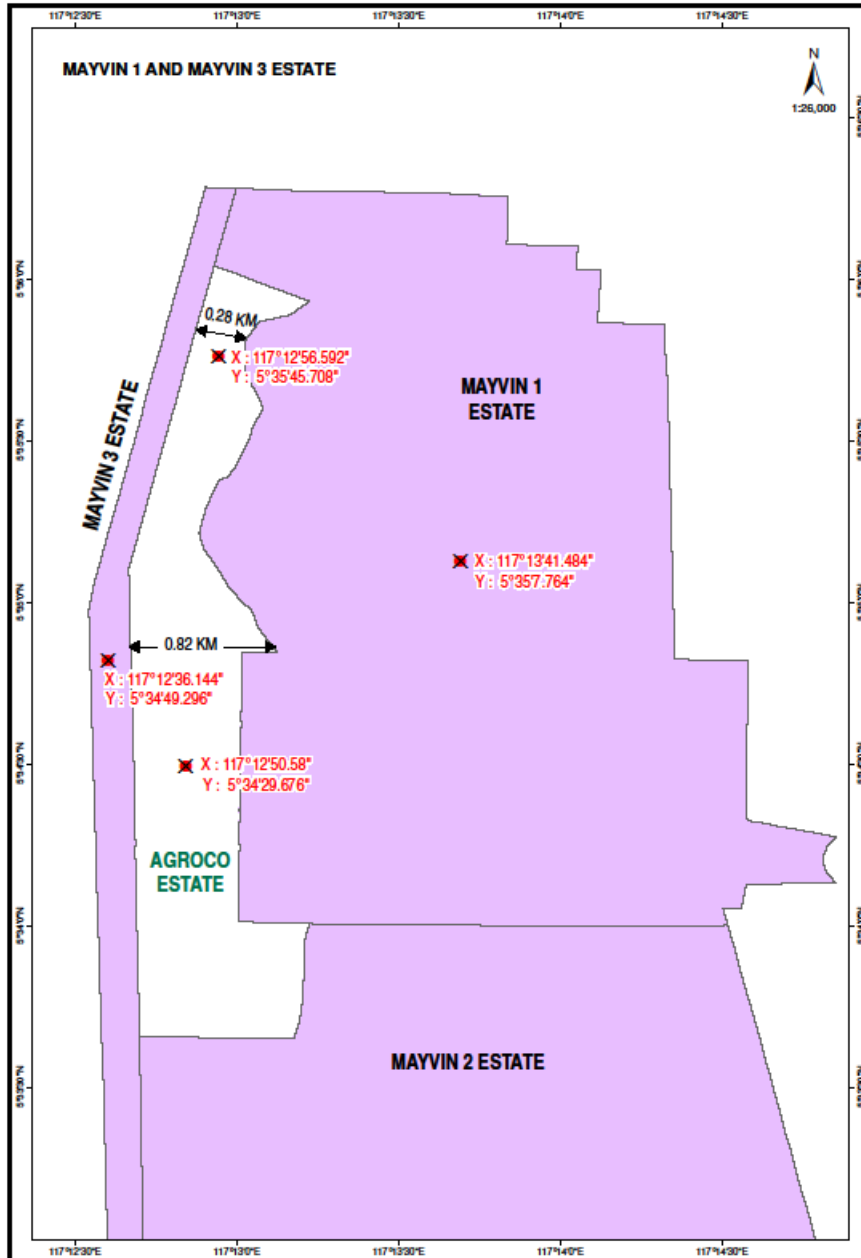
**Location Map of IOI Mayvin Grouping, Sandakan, Sabah, Malaysia (Close up)**



**Report No.: R2019/10-5 IOI Corporation Berhad (Mayvin Grouping: ASA-04)**

**Appendix B-3:**

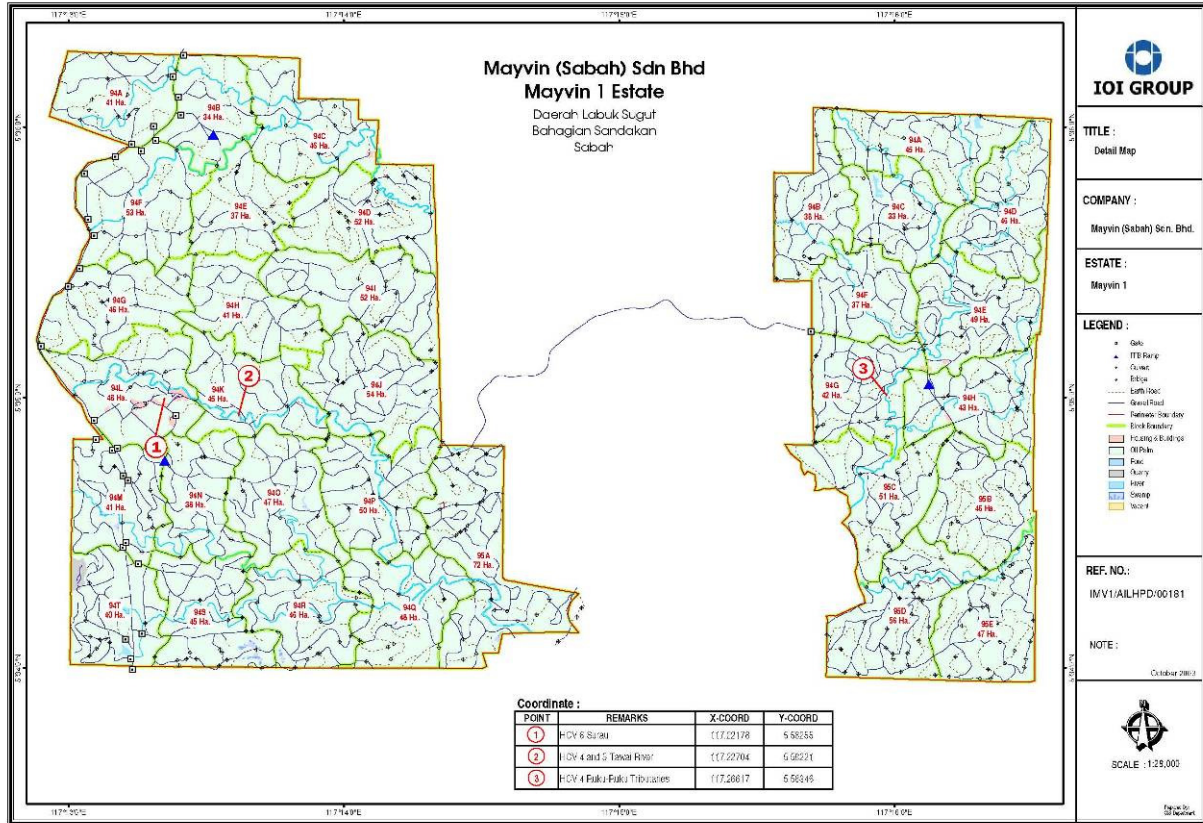
**Map of MAYVIN GROUPING-PMU surrounding the 'Agroco estate' which is independently owned by Golden Land Sdn Bhd.**



**Report No.: R2019/10-5 IOI Corporation Berhad (Mayvin Grouping: ASA-04)**

**Appendix B-4:**

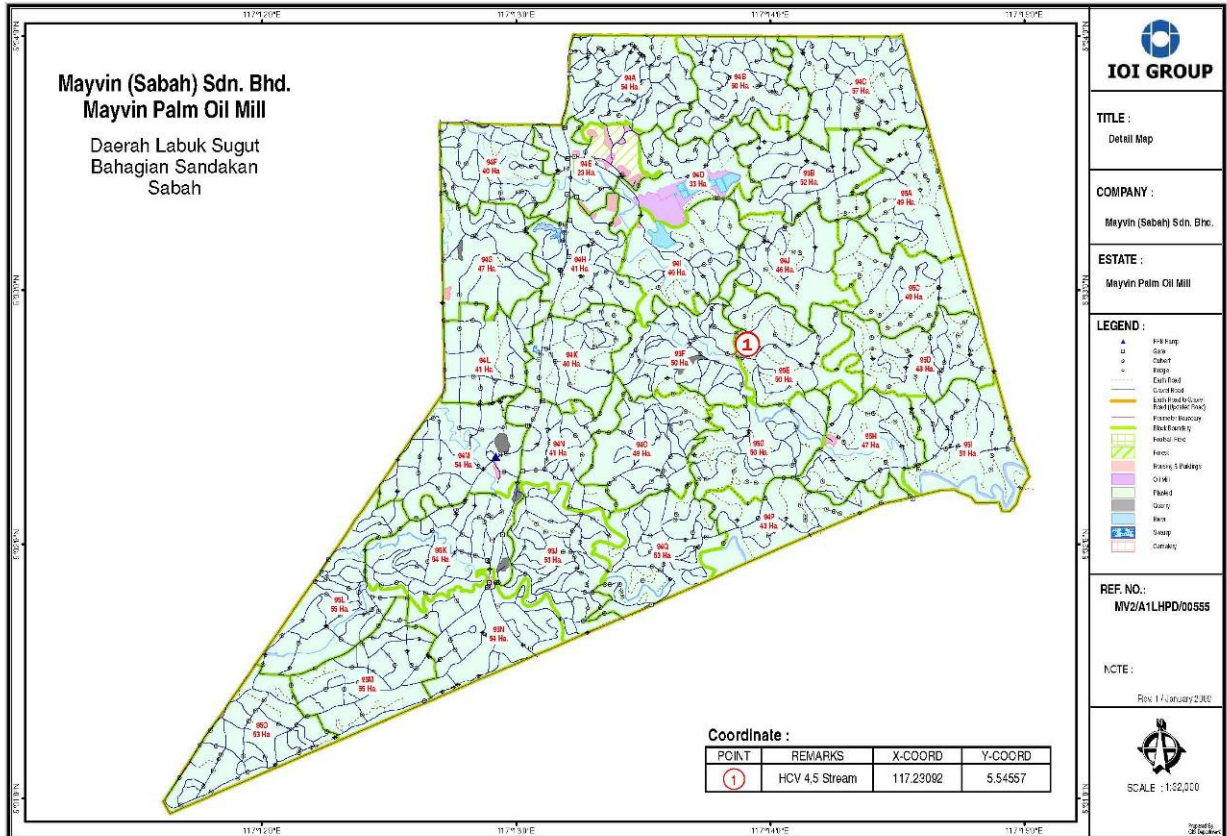
**Layout of Estates and HCV Areas near Mayvin 1 Estate**



Report No.: R2019/10-5 IOI Corporation Berhad (Mayvin Grouping: ASA-04)

Appendix B-5:

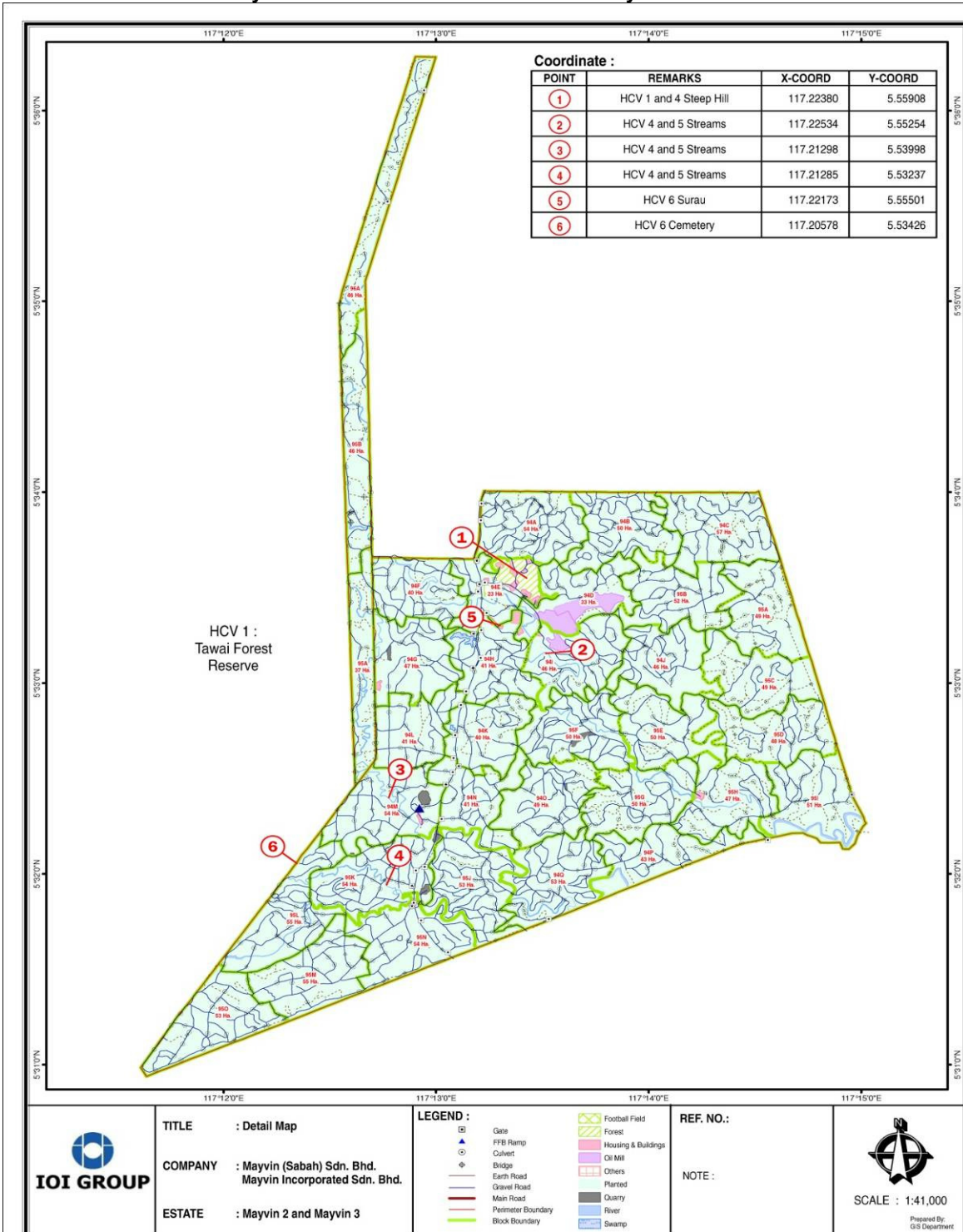
Layout of Estates and HCV Areas near Mayvin 2 Estate



Report No.: R2019/10-5 IOI Corporation Berhad (Mayvin Grouping: ASA-04)

Appendix B-6:

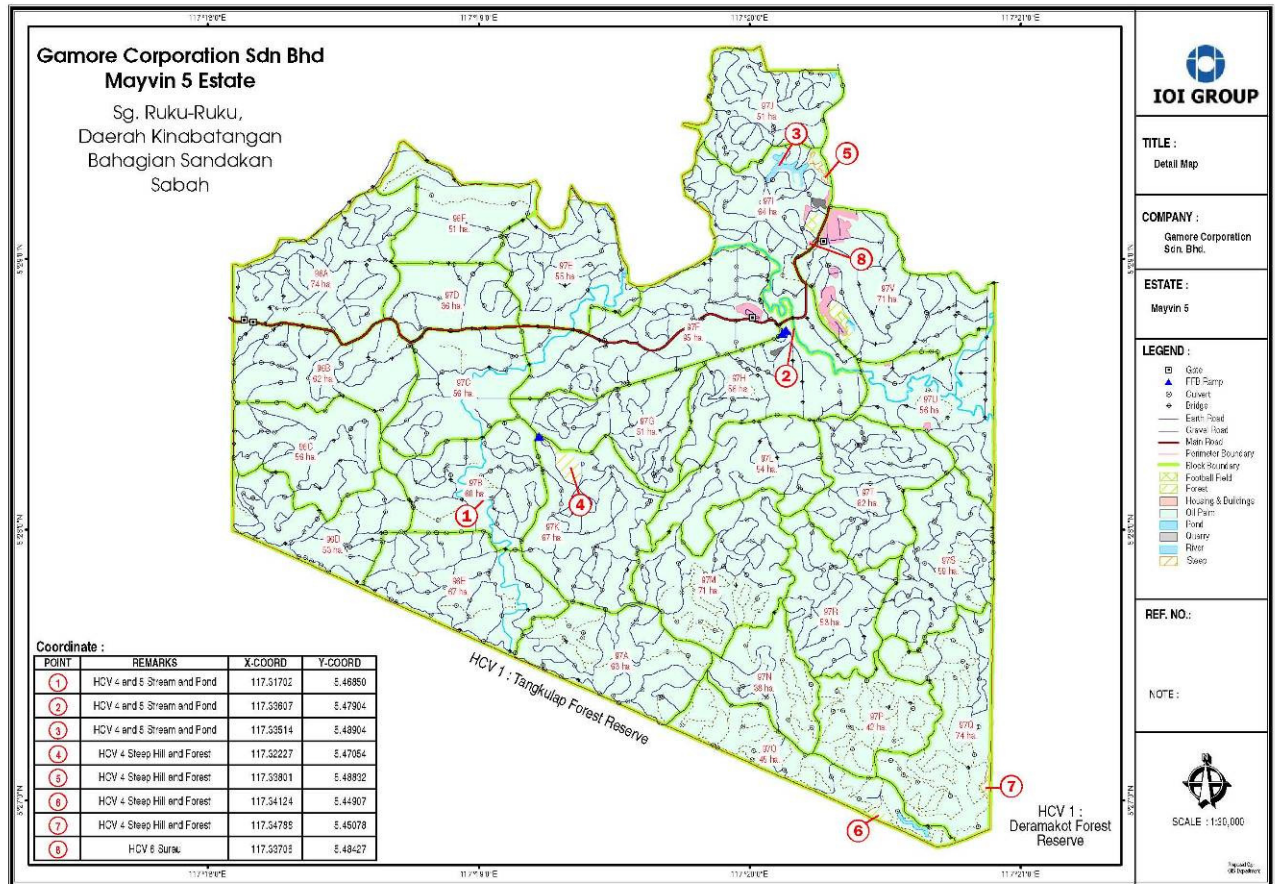
Layout of Estates and HCV Areas near Mayvin 2/3 Estate



**Report No.: R2019/10-5 IOI Corporation Berhad (Mayvin Grouping: ASA-04)**

**Appendix B-7:**

**Layout of Estates and HCV Areas near Mayvin 5 Estate**





Report No.: R2019/10-5 IOI Corporation Berhad (Mayvin Grouping: ASA-04)

Appendix B-8:

Layout of Estates and HCV Areas near Tangkulap Estate

